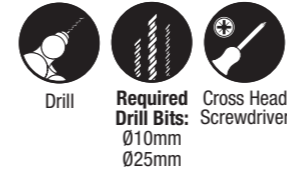
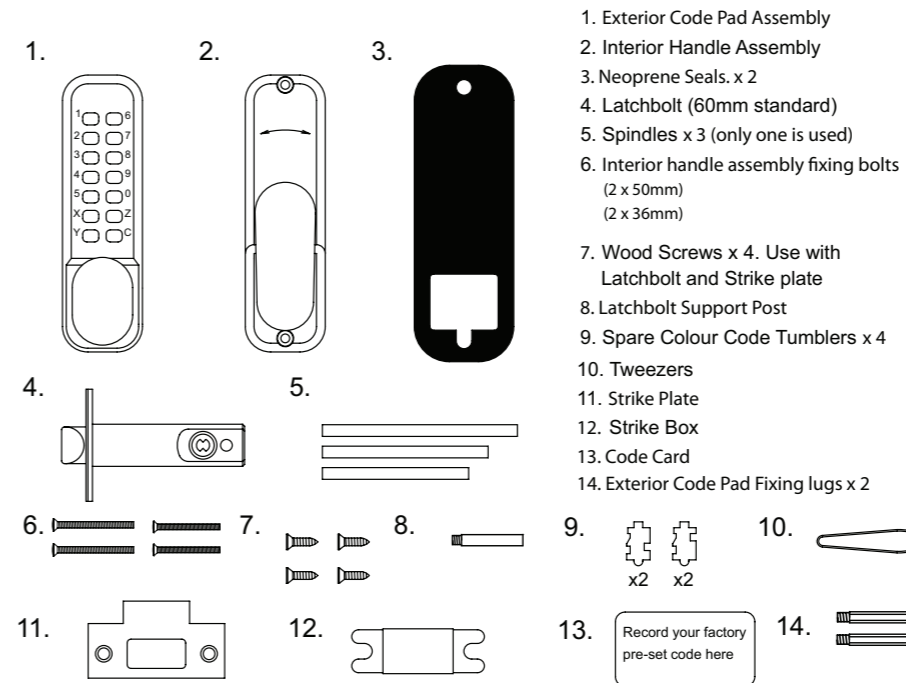


# Yale® Push Button Door Lock Fitting Instructions

## Tools Required



## Pack Contents



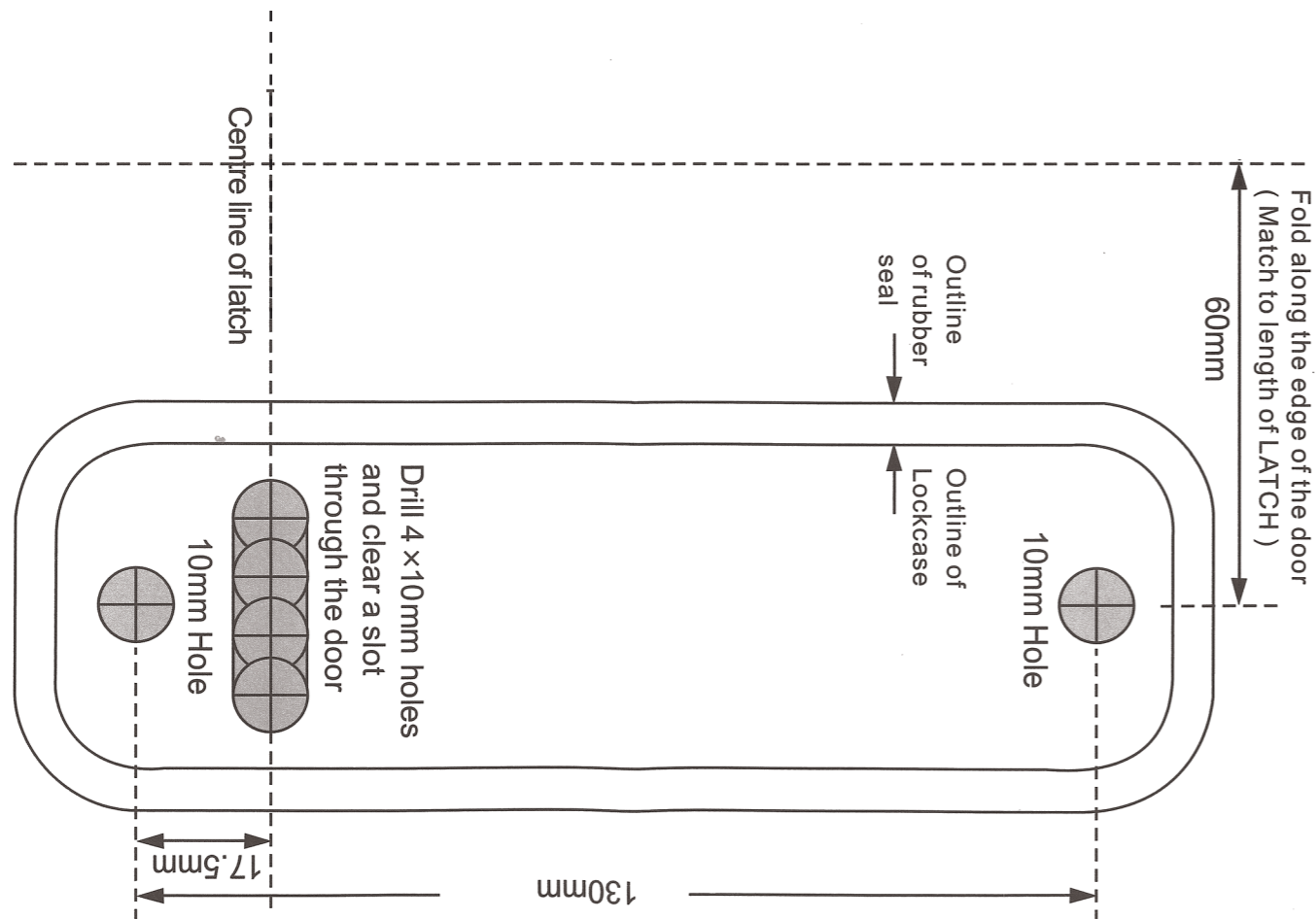
**Yale®** The world's favourite lock since 1843  
 School Street, Willenhall, West Midlands WV13 3PW  
 www.yale.co.uk Tel: +44 (0) 1902 364647 E-mail: info@yale.co.uk

An ASSA ABLOY Group brand

**ASSA ABLOY**

Issue No: 01-2012

## FITTING TEMPLATE



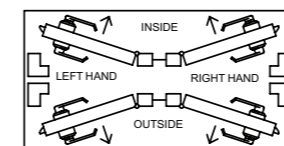
## Fitting Instructions

Before commencing installation check that all parts are working correctly.

- **Exterior Code Pad Assembly:** Enter code from the pre-set factory code card, and turn the knob to the right. The knob should turn and return freely under spring pressure. IF YOU INTEND TO CHANGE THE CODE YOU SHOULD DO IT NOW. Refer to code changing instructions.
- **Interior Handle Assembly:** Make sure that the lever handle turns freely.
- **Latchbolt:** Check that the spring latch and spindle hub move freely.

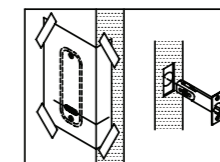
### New Installation:

#### 1) Check the hand of your door



Viewed from the outside (Code Pad side) your door is left handed if the hinges are on the right.

#### 2) Apply the template



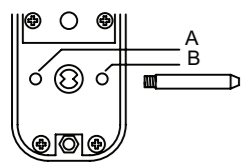
Select the desired position on the door. Fold the template along the dotted 60mm line and tape to the door.

- Mark and drill all six 10mm holes as shown on the template.
- Use a chisel to clear the line of 4 x 10mm holes into a single slot.
- Mark the central point on the "centre line of latch" on the edge of the door and drill a 25mm hole to a depth of 95mm for the latchbolt.
- Insert the latchbolt into the the edge of the door and mark around the face plate.
- Remove the latchbolt and cut a 3mm rebate so that the face plate fits flush with the edge of the door.
- Fit the latchbolt with 2 wood screws.(Ensure that the bevelled face of the latchbolt faces the door frame)

An ASSA ABLOY Group brand

**ASSA ABLOY**

### 3) Fit latchbolt support post

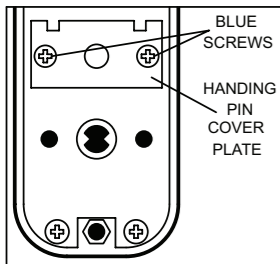


Screw the Latchbolt Support Post in the back of the Exterior Code Pad Assembly. Hole A for left hand hung door and Hole B for right hand hung door.

### 4) Fit exterior code pad fixing lugs

Screw the fixing lugs into the back of the Exterior Code Pad at the top and bottom.

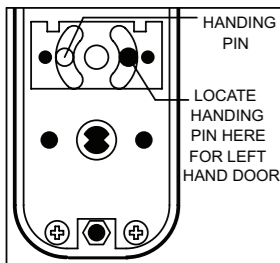
### 5) Handing the code pad assembly



The Exterior Code Pad Assembly is usually factory set for left hand door handing. (The outer knob will turn freely in an anticlockwise direction and resist clockwise turning).

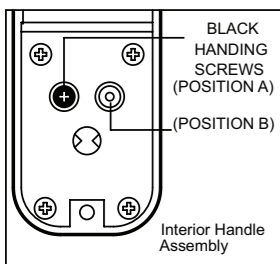
To change for a right hand door:

- Remove the two BLUE screws and handing pin cover plate.
- Remove the handing pin and replace it in the hole horizontally opposite.
- Replace handing pin cover plate.



Check that the outer knob now turns freely in a clockwise direction and resists anticlockwise turning.

### 6) Handing the interior handle assembly



The Interior Handle Assembly is usually factory set for left hand door handing. (The handle will turn freely in an anticlockwise direction only).

- To change for a right hand door:
- Remove BLACK handling screw from position A and relocate it in position B.

Check that the inside handle now turns freely in a anti-clockwise direction only.

### 7) Positioning the spindle

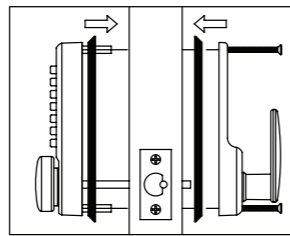


Three spindles are provided. Select the spindle length to suit the door thickness.

- For door thicknesses less than 35mm use the shorter spindle (75mm). For door thicknesses of 35-50mm use the longer spindle (85mm) or (100mm).
- Position the spindle centrally through the latch bolt hub to suit door handing as shown in the diagram above.

### 8) Mounting the lock

Select the fixing bolts to suit the door thickness.



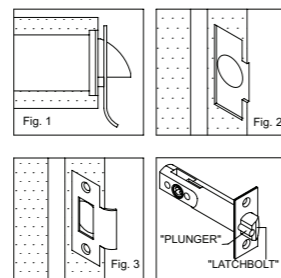
- For door thicknesses less than 48mm use the shorter bolts (36mm).
- Fit the neoprene seals to both the Exterior Code Pad and Interior Handle Assemblies.
- Hold the Exterior

Code Pad Assembly onto the door with the spindle in position ensuring that the latchbolt support post engages the hole in the latchbolt.

- Locate the Interior Handle Assembly on the inside of the door engaging the spindle in the handle hub.
- Screw both sides together using the fixing bolts top and bottom.
- Before final tightening of the fixing bolts make sure the lock is vertical. Test the mechanism to ensure that the lock functions correctly and moves easily. DO NOT overtighten the fixing screws - this may cause distortion and lead to poor operation.

**IMPORTANT :**  
**CHECK THAT THE CODE WORKS TO AVOID A LOCKOUT BEFORE CLOSING THE DOOR.**

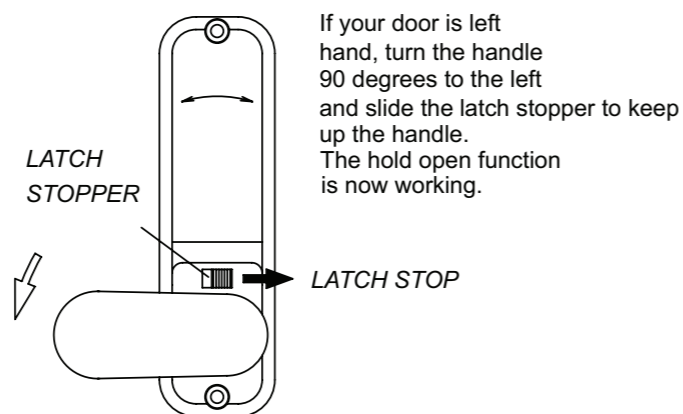
### 9) Fitting the strike plate



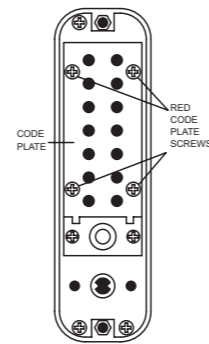
- Close the door against the door frame and transfer the centre of the latchbolt onto the door frame.
- Position the strike plate on the door so that it fits against the flat of the latchbolt, with deadlatch plunger depressed (Fig. 1).
- Close the door and mark the position of the strike plate on the door frame.

- Using the strike plate as a template, align it with the position marks in the door frame and mark the inner and outer edges of the strike plate on the door frame.
- Cut a 1mm deep rebate so that the strike plate fits flush with the door frame (Fig 2).
- Drill and chisel out the latchbolt hole to accommodate the strike box (Fig 3).
- Fit the strike plate and strike box using only one wood screw at first to ensure that it is positioned accurately.
- The latchbolt only and not the deadlatch plunger should enter the aperture freely and be held without excessive play.
- When correctly positioned secure with the second wood screw and check lock set for smooth operation.

### 10) Push button lock with hold open function ( Model P-DL02 only )

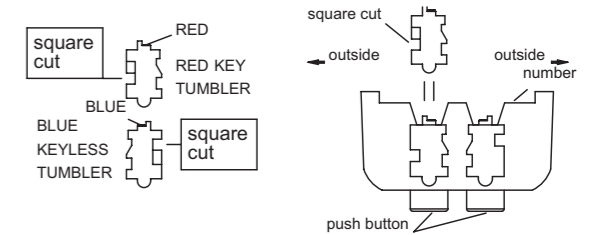


## Changing the code number

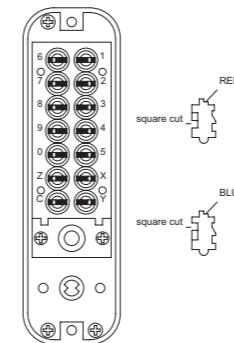


- Remove the lock from the door.
- Remove the 4 red code plate retaining screws from the back of the Exterior Code Pad Assembly. Take extra care to keep the lock body on a flat surface when removing the code plate to avoid spilling the small code module components.
- From the factory code setting, there are 5 RED coloured key active code tumblers and 8 BLUE coloured "keyless" code tumblers plus 1 neutral code tumbler in the "C" position. (this is the code clearing tumbler and must not be removed.)
- Push and hold the "C" button. Never attempt to remove the "C" button code tumbler. With the "C" button held down, remove one or more code tumblers using the tweezers supplied.
- Note the different shapes of the code tumblers before re-inserting them into the code module.

RED and BLUE code tumblers have the square cut low and high respectively. WHEN REPLACING CODE TUMBLERS THE SQUARE CUT MUST ALWAYS FACE THE OUTSIDE OF THE LOCK BODY.



- Establish and write down your new code and insert the appropriate coloured tumbler next to the code numbers in the module. DO NOT LEAVE ANY TUMBLER POSITION EMPTY. With the spare tumblers provided in the screw pack you can reduce or increase your code to 4 or 6 digits.
- Replace the code plate and secure with the 4 red retaining screws.
- Check the code by pressing the "C" button followed by the code number.
- The knob should turn freely in both directions if not return to step 4 and confirm that the instructions have been fully followed.
- Reinstall the lock and place the spare colour code tumblers in a safe place with the instructions and code.



### IMPORTANT:

Before changing codes the "C" button must be depressed and held in the down position throughout code changing procedure. Failure to do this will damage the code module. Similar damage will occur if codes are not re-inserted correctly. Please refer to code change instructions.

## FITTING TEMPLATE

