

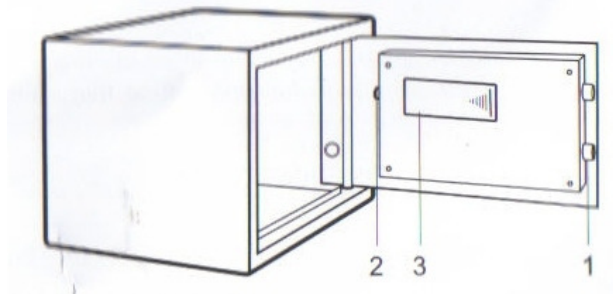
INTELLIGENT ELECTRONIC SAFE

NOTE: Please do not keep emergency keys in your safe

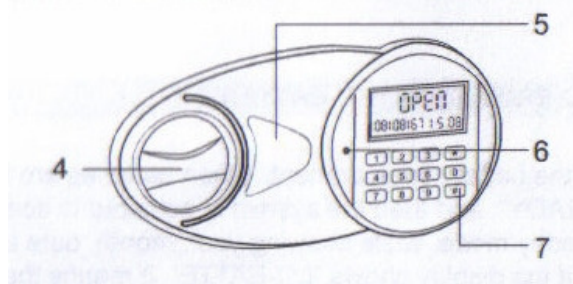
Thank you for choosing one of our Safewell products, you have taken an important step in organising and protecting your most valued possessions.

ATTENTION: Please take time to read and familiarise yourself with the operating instructions of your new safe presented on the following pages.

Schematic drawing of case



Schematic drawing of control panel



1. Locking Bolts
2. Reset Button
3. Battery Compartment (4 x AA Batteries)
4. Door Knob
5. Emergency Lock Cover
6. Jack Plug Socket for Emergency Power
7. Confirmation Button

OPENING YOUR SAFE FOR THE FIRST TIME

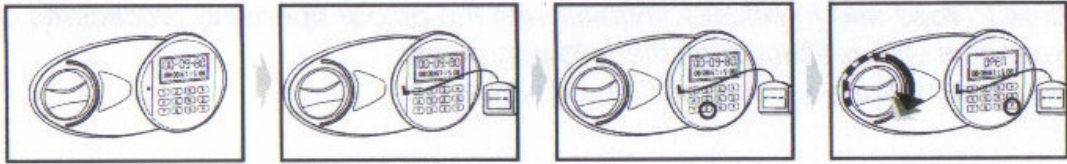
There are two options when opening the safe for the first time.

OPTION A: (Using the Jack Plug):

This safe has been supplied with an external power supply, which looks like a separate battery pack with a cable attached and a jack plug at the end.

Insert batteries into the power supply, then connect the jack plug into the Jack Plug Socket on the front of the safe.

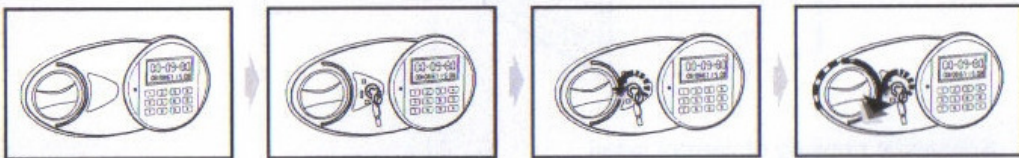
Press “#” to startup the electronic lock. Enter preset user code “1234”, then press the “#” key. This should then enable you to turn the Door Knob 90° clockwise allowing you to open the door.



OPTION B: (Using the Emergency Key):

When opening the safe for the first time, please use the emergency key. To operate the emergency key, you will first need to remove the Emergency Lock Cover, which can be unclipped by inserting a fingernail or small knife into the cut out slot underneath the cover. Next, you will need to insert the Emergency Key into the key-lock and turn the key 45° anti-clockwise. This should then enable you to turn the Door Knob 90° clockwise allowing you to open the door. Please turn the Emergency Key back to the original position to complete this part of the operation, remove the key and replace the Emergency Lock Cover.

CAUTION: Remove the emergency key and keep it in a safe place, **NOT** inside the safe.



INSERTING THE BATTERIES

Open the door using the instructions above. Insert 4 x AA batteries into the battery compartment located on the back panel of the door. When the batteries are inserted, the display will read “ALL READY”. The system will then activate and scan the circuit before placing the safe in standby mode, while showing the year, month, date and day. Under normal conditions, if the display shows “LO-BATTE”, this means that the voltage is low and you should insert new batteries.

CAUTION: Replace the batteries by lining them up in a manner as indicated by the “+” and “-” signs. It is possible that you may need to reset the User Code, particularly if batteries have been removed for longer than thirty minutes.

SETTING THE USER CODE FOR THE FIRST TIME

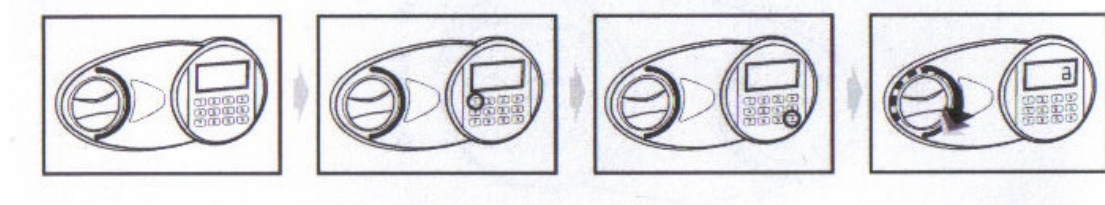
- With the door open and the Locking Bolts retracted, press the Reset Button once. The display will show the message “- - - - -”
- You can then input your desired User Code (3-8 digits).
- To complete the set up press the “#” Button. The digital display will read “INTO” to confirm the set up.

CLOSING DOOR

Push the door into position and turn the Door Knob anti-clockwise to close the door.

OPENING DOOR

- Press the “#” key once.
- Input your User Code (3 to 8 digits) within 7 seconds of beginning the procedure.
- Press the “#” Button once more to confirm your User Code.
- Rotate the Door Knob clockwise and pull outwards, the door is opened.



CAUTION: You may press the “*” key to clear any incorrect digit that you may have input. One digit will be cleared each time you press this button.

AUTOMATIC LOCK

If you input the wrong User Code three times, this will lock out the safe for 5 minutes and the alarm will sound for 30 seconds. If you enter the correct code during this time, the alarm will stop sounding.

SETTING A MASTER CODE

- With the door open and the Locking Bolts retracted, press the “#” button once, this will emit an audible double tone.
- Follow this by pressing the “0” button twice. This will emit an audible beep for each pressing of the button.
- You will then need to press the “Reset Button” on the inside of the safe. This will emit an audible double beep.
- You can then input your desired User Code (3-8 digits), with each press emitting an audible beep.
- To complete the set up press the “#” Button. This will display the word “INTO” on the screen which indicates the successful setting of the new Master Code.

SETTING THE DATE AND TIME

The initial setting for the date is 00(year)-01(month)-01(date), for the time 00:00, and for the day 1(Monday).

To rest, you will need to press the “*” key once followed by “2” then “8” to begin the set up. Pressing the “#” key will shift from date, to time and week setting.

MOUNTING METHOD

Fix the safe to a place where it will not be easy to move, ideally a brick wall or concrete floor. The fixings provided are suitable for mounting the safe to a brick wall or to a concrete floor.

- Position the safe in its desired location and mark out the points where the holes are to be drilled for the fixings to be fitted.
- Drill the holes for fixings using a drill bit of the same diameter as the expansion sleeves.
- Turn the fixing bolts anti-clockwise to separate from the expansion sleeve and nut.
- Insert the expansion sleeve and nut into the hole and position the safe back into place.
- Insert the fixing bolt and washer through the pre-drilled holes in the safe and into the expansion sleeve. The fixing bolt will engage with the nut at the end of the expansion sleeve and tightening will secure the safe.

